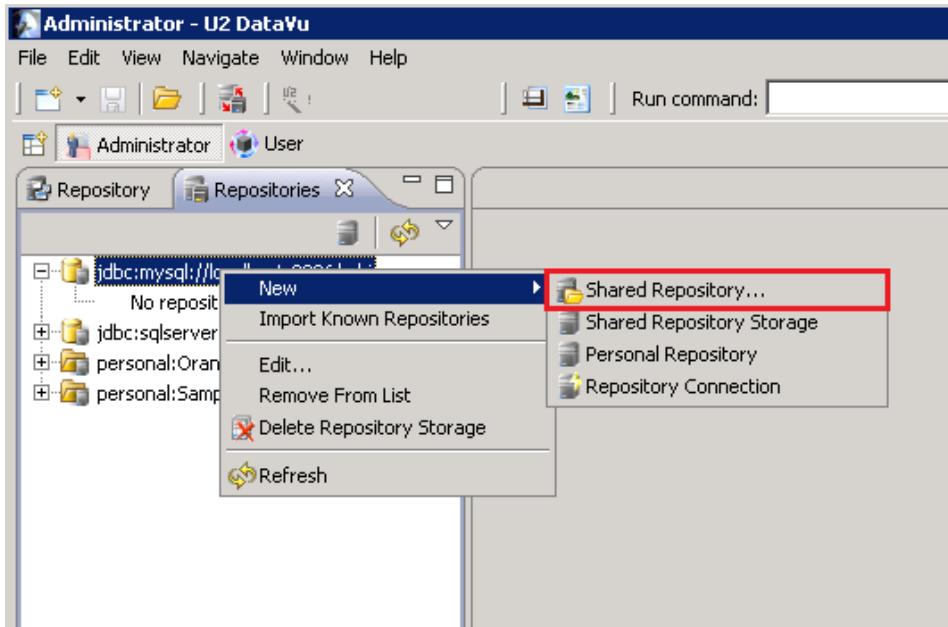


## Creating a Shared Repository and Repository Connection in U2 DataVu

The Shared Repository is used to store U2 DataVu procedures. It can be thought of as a collection of folders within the Shared Repository Storage. After you have created the shared repository storage in MySQL the next step is to create a shared repository in it.

1. From the Repositories tab of the Administrator perspective, right-click on the MySQL shared repository storage and then select **New > Shared Repository**.



2. Provide a name for the shared repository.

**Create New Repository**

Create new repository.

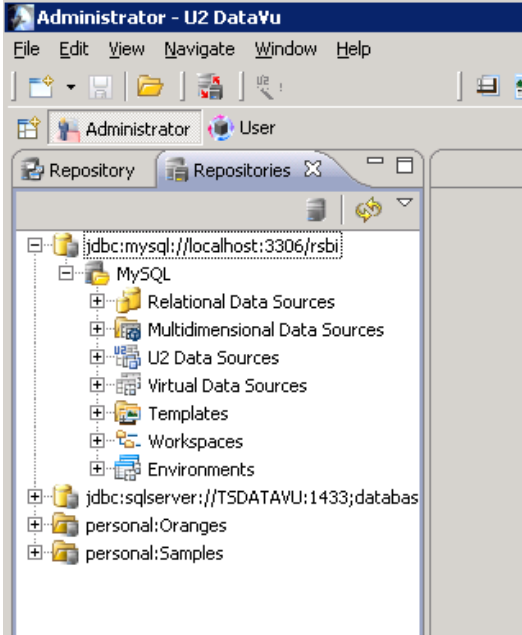
Name: MySQL

Comment:

Security provider: None

< Back   Next >   Finish   Cancel

- The repository is created along with its default folders.



Note: Once you have created the repository, create the U2 Data Source(s) in it. You can also create the data sources after creating a repository connection but you must do so without being connected to the connection at the time.

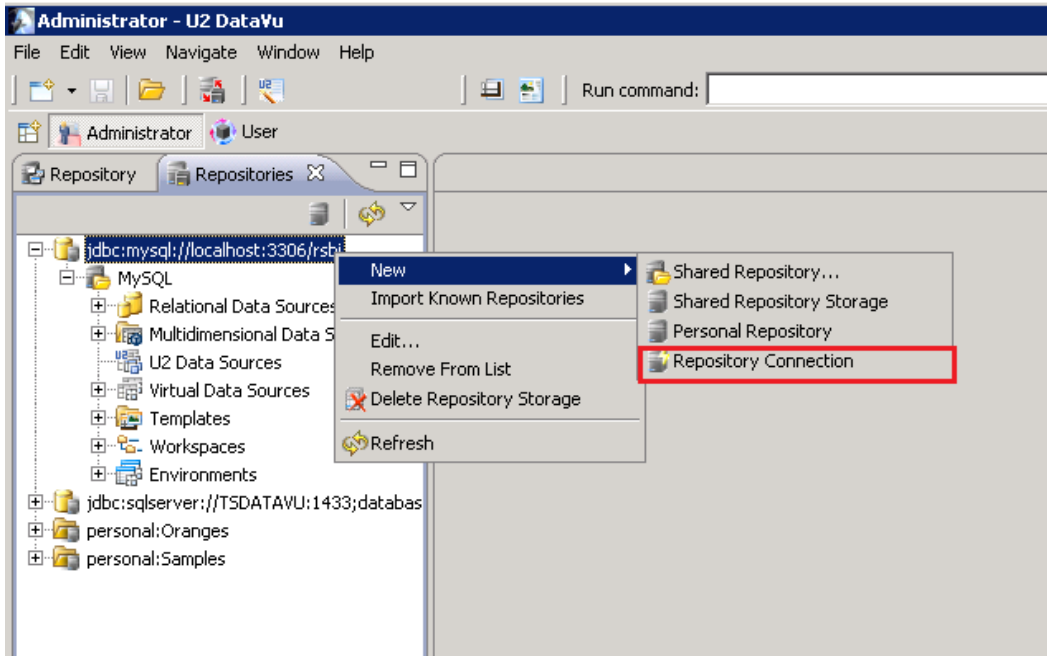
### Create a Repository Connection

The Repository Connection is what is used to connect with and log into MySQL. The Repository Connections tab at the bottom of the screen displays the connections that have been configured.

The screenshot shows the 'Repository Connections' tab in the Administrator interface. It displays a table with the following data:

Name	Type	Repository Storage	Repository
Oranges	Personal	personal:Oranges	Default
Samples	Personal	personal:Samples	Default

1. Right-click on the MySQL shared repository storage and then select **New > Repository Connection**.



2. Enter a **Connection name** for this connection.
3. Connect using **Set User Information**.
4. Select the **Repository name**.
5. Select **Protected** for the Protection Mode.
6. Click **Finish**.

Define connection name and connection parameters

Connection name: MySQLconn

Connect immediately

Connection Parameters

Connection type:  JDBC  JNDI

JDBC Driver: MySQL

JDBC URL: jdbc:mysql://localhost:3306/rsbi

Repository name: MySQL

Connection Mode

Unprotected

Auto

Protected

Protection method: Stored procedures

Collection ID: RSBI

< Back Next > Finish Cancel

The repository connection is created and a connection made to it. The repository now appears on the Repository tab of the Administrator perspective. At this point, you can create queries and dashboards.

Name	Type	Repository Storage	Repository
MySQLconn (connected)	Database	jdbc:mysql://localhost:3306/rsbi	MySQL
Oranges	Personal	personal:Oranges	Default
Samples	Personal	personal:Samples	Default